



Oracle Primavera Cloud

WHITE PAPER

Joseph Shane
CATALYST | JSHANE@CATALYSTUSA.COM

Introduction

Improve the predictability of project outcomes with [Oracle Primavera Cloud Service](#). Integrate strategic project and portfolio planning, scheduling, and resource and risk management to support your entire project portfolio - from ideation through operations and maintenance.

The Challenges of Improving Predictable Outcomes

Engineering and construction projects are plagued by systemic coordination and communication hurdles. Owners are challenged with aligning and incentivizing multiple organizations towards specific milestones, goals, and objectives. In addition, owners know their data interests go far beyond project selection and management. Owners' developed assets must be cared for and maintained long after their project delivery partners have progressed to the next job.

A lack of standard and centralized project and portfolio management impairs optimization, yields inconsistent planning and scheduling processes, limits collaboration, impedes progress tracking, and weakens risk management. Moreover, the inability to synchronize schedule data and processes restricts efforts to unlocking predictive intelligence - when and where it is needed - to improve decision-making.

These factors all increase the likelihood of unpredictable outcomes, unwanted risk exposures, and operational deficiencies that uniquely impact how owners plan, build, and operate their assets.

The Solution: Oracle Primavera Cloud Service

Oracle Primavera Cloud Service is a fully integrated strategic planning, scheduling, and risk management solution designed to support the entire project portfolio - from ideation through operations and maintenance.

Justify project investments with portfolio management and capital planning. Unite all office and field teams into one shared execution plan with the only planning and scheduling solution that integrates critical path method (CPM) scheduling with field task management.

Coordinate and optimize labor, equipment, and material resources within and across your portfolios. Easily centralize schedule and risk management processes for consistent



program and portfolio roll-ups. Include all your trade partners, from the novice to the earned value management (EVM) expert, with tailored end user experiences that are highly secure and compliant with your processes. Plan strategically, build intelligently, and operate efficiently with a solution that includes a 30-year track record of service to owners everywhere.

Portfolio Management

As a central repository of all projects, Oracle Primavera Cloud Service helps categorize, score, select and manage the right projects to meet strategic objectives. Fund and manage the right projects with simplified scoring worksheets and intuitive investor maps. Quickly create shareable scenarios to discuss and present alternatives around schedule, resource and cost adjustments. Use portfolio dashboards and trending analysis to measure performance at any level.

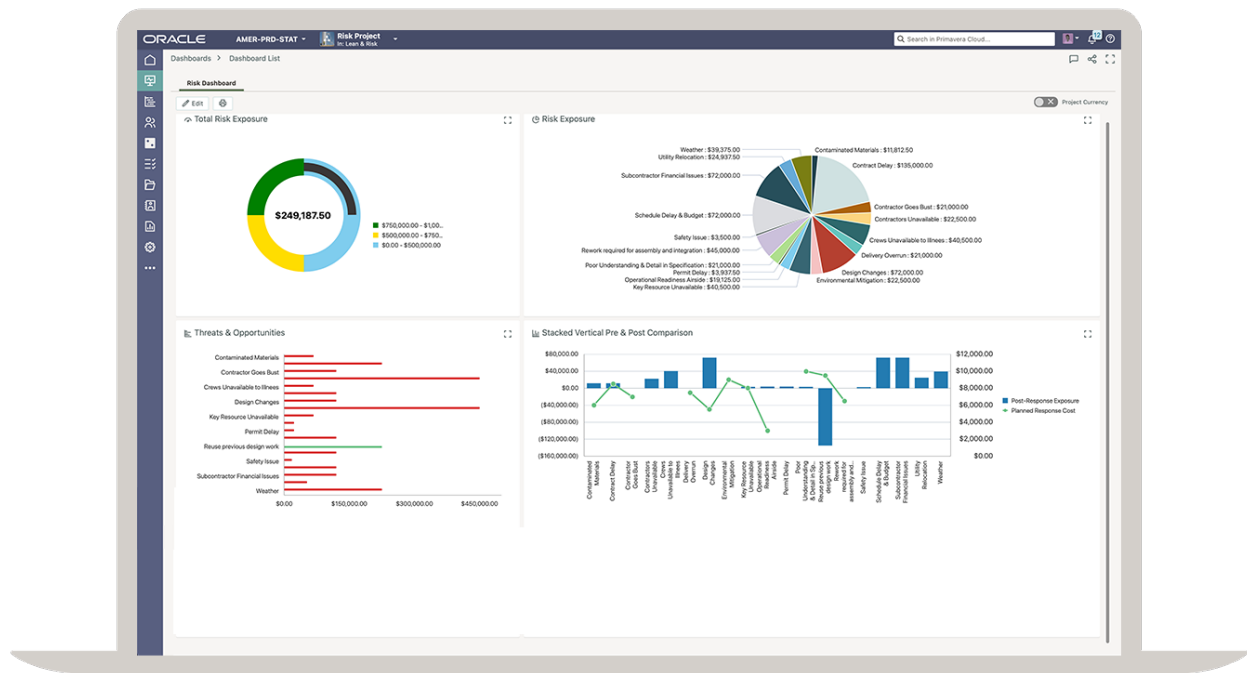


Figure 1 - Strategic Portfolio Management

Planning, Scheduling, and Resource Management

Planning, scheduling, and resource management is the heartbeat of project or program delivery. A well-developed and collaboratively built schedule helps coordinate office and field teams to provide fully synchronized execution plans. Easily maintain the vital connection between the contractual critical path method (CPM) schedule and the field's task management detail. Use digitized planning and execution boards to unite and

focus teams around milestones, deliverables, and productivity in one integrated solution.

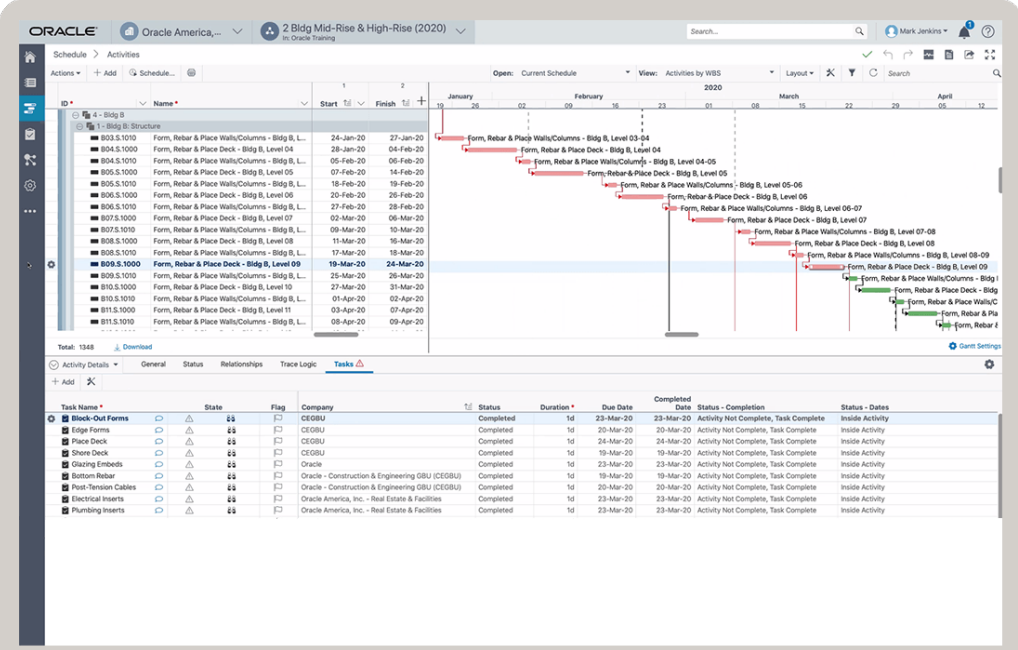


Figure 2 - P6 Professional Cloud

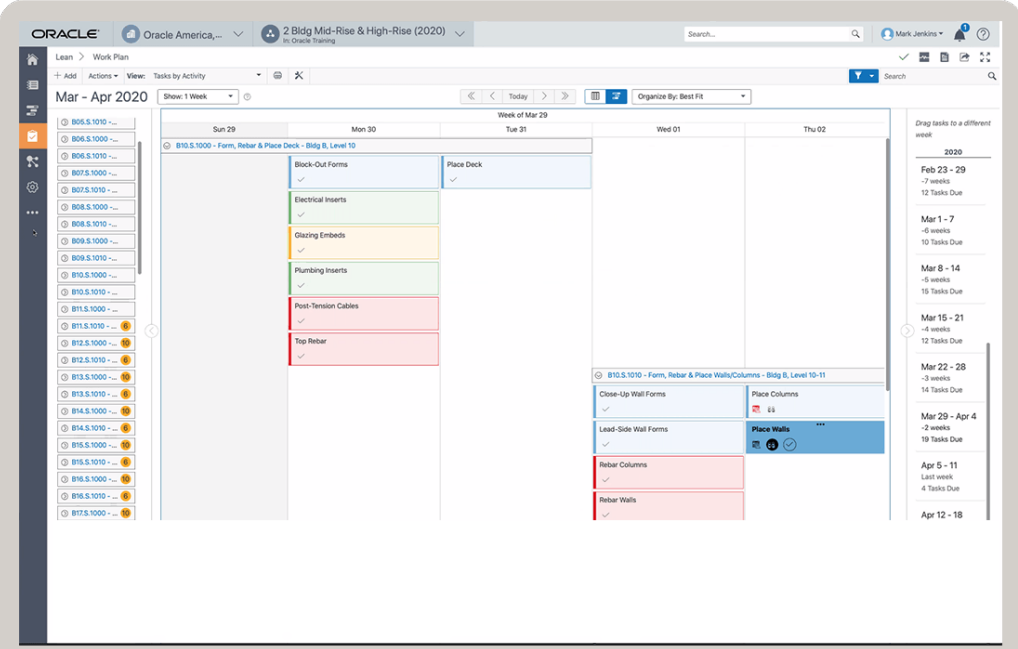


Figure 3 - Lean



Easily manage labor, equipment, and material resources within and across all projects, programs, and portfolios with Oracle Primavera Cloud Service. The solution provides a centralized resource and roles pool, making it easy to plan and optimize around resource scarcities or bottlenecks using worksheets, histograms, or profiles.

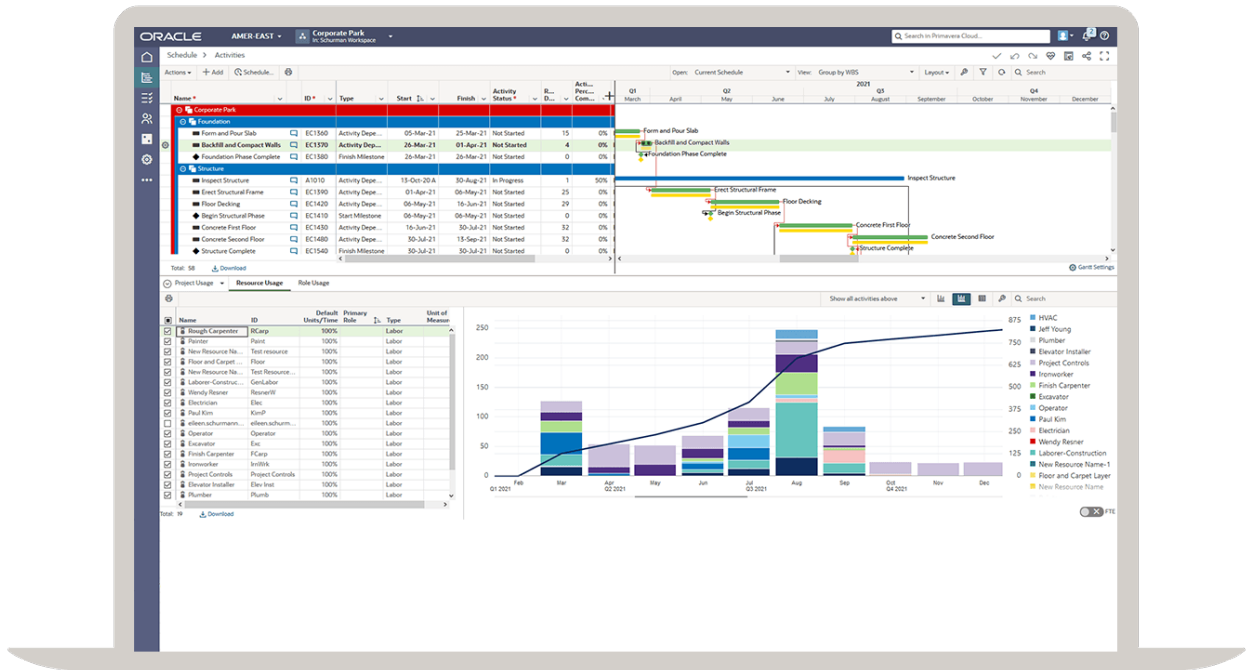


Figure 4 - Resource Management

Oracle Primavera Cloud Service makes it easy to handle projects or programs of any size or complexity. Cover the needs of office and field teams, whether they need simple and easy to adopt tools or sophisticated capabilities such as advanced EVM, resource, cost, and risk management controls.



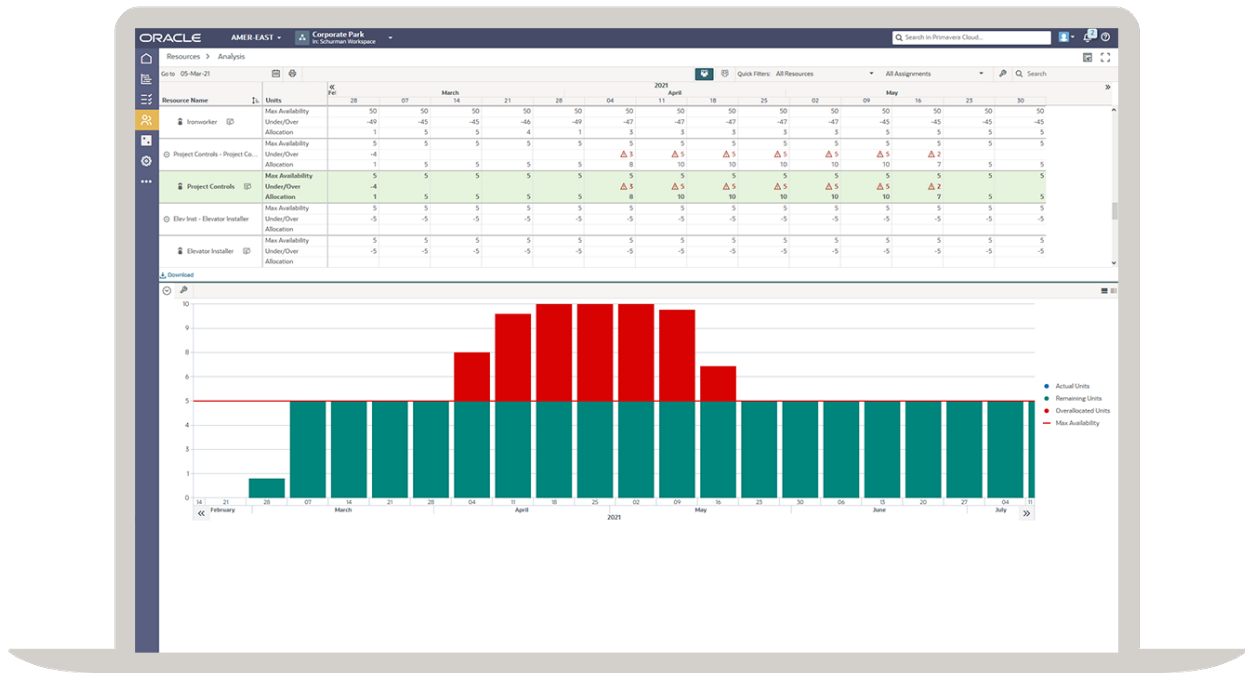


Figure 5 - Earned Value

Risk Management

Along with core planning and scheduling capabilities, Oracle Primavera Cloud Service provides a centralized risk register for all users. Accessible from anywhere, this register enables early identification of opportunities and threats and democratizes risk as where all parties can easily contribute. Pre-configured risk management dashboards identify exposures, categorize them for impact assessment, and enable swift resolution with targeted mitigation plans.

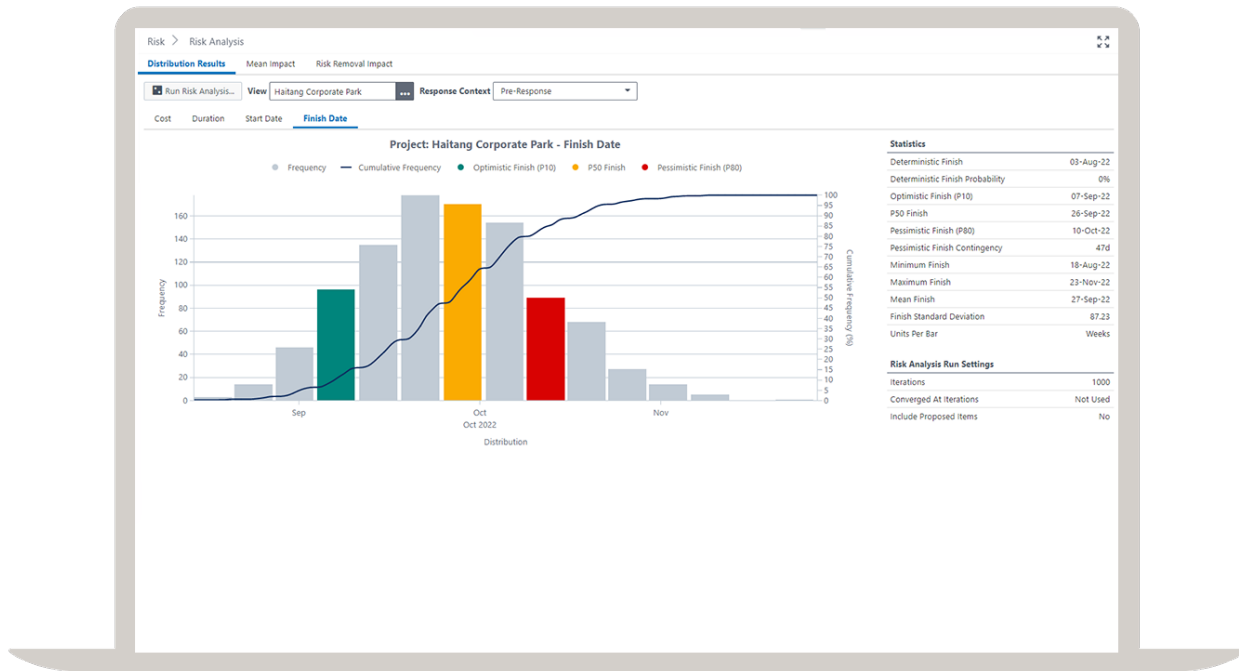


Figure 6 - Risk Management

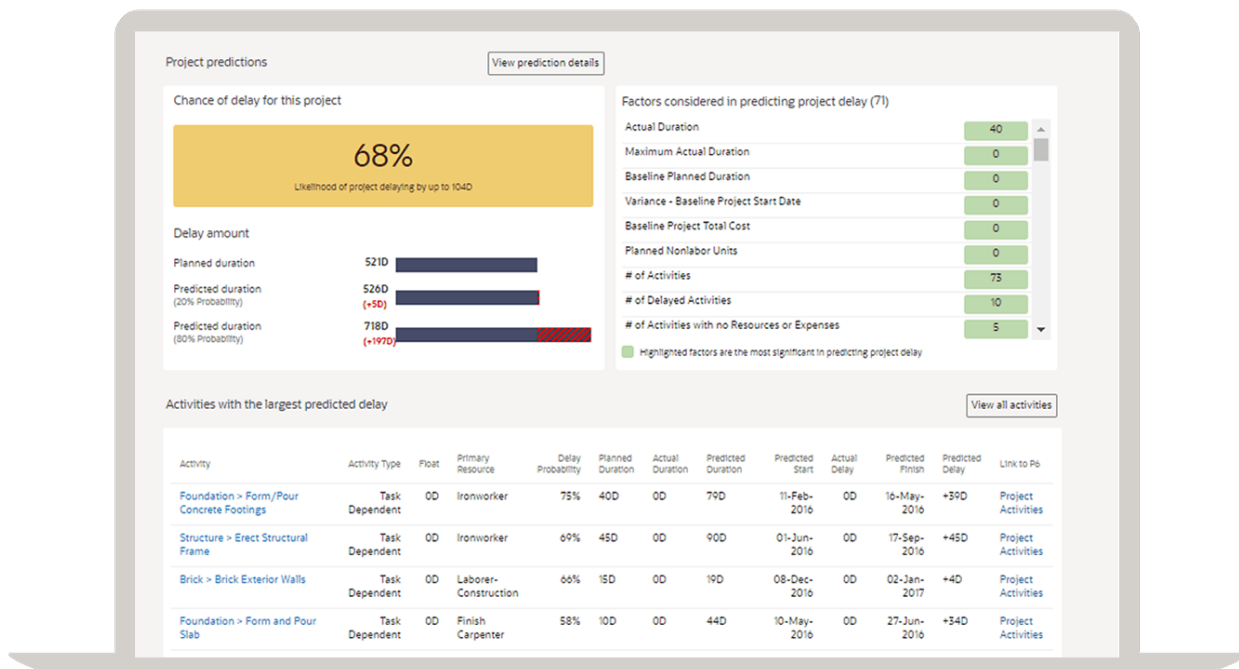


Figure 7 - Schedule Performance

Oracle Primavera Cloud Service – Key Capabilities

- Portfolio management and capital planning
- What-if scenario planning of schedule, cost, resources, and risks
- Critical path method (CPM) planning and scheduling with integrated field task management
- Digital planning and execution scheduling boards (Lean)
- Highly configurable tasks to support field planning and execution (task color-coding, hand-off sequences, commitments, constraints, etc.)
- Mobile progress management
- An always-on schedule health check assistant
- Centralized risk register and risk management dashboards
- Portfolio, program, and project resource and cost histograms
- Advanced baseline and scenario management
- Any-point-in-time schedule comparisons
- Earned value management (EVM)
- Extend predictive AI/ML insight and reporting.

Pricing Structure

The pricing structure of Oracle Primavera Cloud is that of a monthly service fee (paid annually). You can use all of the services or pick and choose whatever fits your company.

Name	Description	Monthly Fee	Minimum Users
Schedule Cloud Service	This is the scheduling tool, much like traditional Primavera	\$120	5
Task Management	This is the lean module (Included in Schedule Cloud Service)	\$55	5
Progress Service	The traditional Progress Reporter equivalent (Included in Schedule Cloud Service)	\$12	5
Portfolio Management	Primavera's Portfolio Management tool	\$220	5